

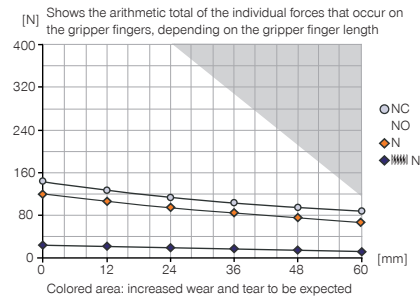
# 2-JAW PARALLEL ROTARY GRIPPERS

## INSTALLATION SIZE DGP404

### PRODUCT SPECIFICATIONS

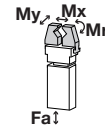


#### Gripping moment diagram



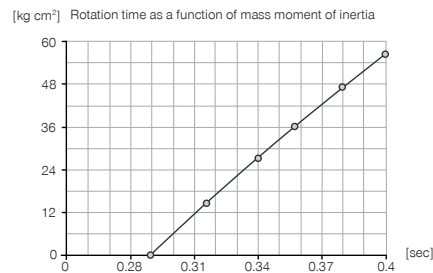
#### Forces and moments

Displays static forces and moments that can also have an effect, besides the gripping force.



|         |     |
|---------|-----|
| Mr [Nm] | 8   |
| Mx [Nm] | 15  |
| My [Nm] | 10  |
| Fa [N]  | 300 |

#### Rotation time diagram



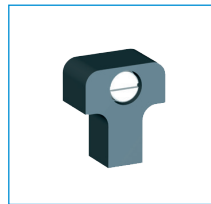
### INCLUDED IN DELIVERY



Flow Control Valves - with Swivel joint  
**DRVM5X4**



Centering Disc  
**DST40400**



Stop 90° + 180°  
**ANS0065**

### RECOMMENDED ACCESSORIES



Magnetic field sensor Angled Cable 5 m  
**MFS103KHC**



Magnetic field sensor Angled Cable 0,3 m - Connector M8  
**MFS103SKHC**



Magnetic field sensor Straight Cable 5 m  
**MFS204KHC**



Magnetic field sensor Straight Cable 0,3 m - Connector M8  
**MFS204SKHC**



Straight Fittings - Quick Connect Style  
**GVM5**

| Order no.                                 | ▶ Technical Data* |               |               |
|---|-------------------|---------------|---------------|
|   | DGP404N           | DGP404NC      | DGP404NO      |
| Stroke per jaw [mm]                       | 4                 | 4             | 4             |
| Gripping force in opening [N]             | 115               |               | 155           |
| Gripping force in closing [N]             | 115               | 155           |               |
| Gripping force secured by spring min. [N] |                   | 40            | 40            |
| Closing time / Opening time [s]           | 0.01 / 0.01       | 0.015 / 0.015 | 0.015 / 0.015 |
| Torque [Nm]                               | 0.5               | 0.5           | 0.5           |
| Repetition accuracy +/- [mm]              | 0.05              | 0.05          | 0.05          |
| Repetition accuracy +/- [°]               | 0.05              | 0.05          | 0.05          |
| Axial bearing load [N]                    | 960               | 960           | 960           |
| Radial bearing load [Nm]                  | 10                | 10            | 10            |
| Operating pressure [bar]                  | 3 ... 8           | 3 ... 8       | 3 ... 8       |
| Operating temperature [°C]                | 5 ... +80         | 5 ... +80     | 5 ... +80     |
| Air volume per cycle [cm³]                | 3                 | 5             | 5             |
| Air volume per cycle 90° [cm³]            | 4.5               | 4.5           | 4.5           |
| Air volume per cycle 180° [cm³]           | 9                 | 9             | 9             |
| Weight [kg]                               | 0.44              | 0.48          | 0.48          |

\*All data measured at 6 bar

