

3-JAW CONCENTRIC GRIPPERS

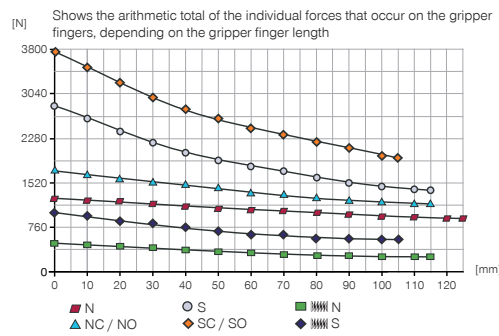
INSTALLATION SIZE GPD5008

1

▶ PRODUCT SPECIFICATIONS

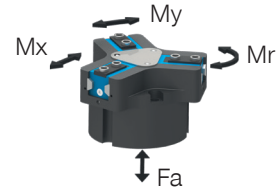


▶ Gripping force diagram



▶ Forces and moments

Displays static forces and moments that can also have an effect, besides the gripping force.



Mr [Nm]	60
Mx [Nm]	105
My [Nm]	65
Fa [N]	1900

▶ TECHNICAL DATA

▶ Technical Data*

Order no.	GPD5008N	GPD5008NC	GPD5008NO	GPD5008S	GPD5008SC	GPD5008SO
Stroke per jaw [mm]	8	8	8	4	4	4
Gripping force in closing [N]	1260	1690		2780	3730	
Gripping force in opening [N]	1340		1770	2960		3910
Gripping force secured by spring min. [N]		430	430		950	950
Closing time [s]	0.048	0.035	0.055	0.048	0.035	0.055
Opening time [s]	0.048	0.055	0.035	0.048	0.055	0.035
Weight per jaw max. [kg]	0.7	0.7	0.7	0.7	0.7	0.7
Length of the gripper fingers max. [mm]	125	115	115	115	105	105
Repetition accuracy +/- [mm]	0.01	0.01	0.01	0.01	0.01	0.01
Operating pressure min. [bar]	3	4	4	3	4	4
Operating pressure max. [bar]	8	7	7	8	7	7
Operating temperature [°C]	-10 ... +90	-10 ... +90	-10 ... +90	-10 ... +90	-10 ... +90	-10 ... +90
Air volume per cycle [cm³]	51	90	90	51	90	90
Protection to IEC 60529	IP64	IP64	IP64	IP64	IP64	IP64
Weight [kg]	0.83	1	1	0.83	1	1

▶ Technical Data - Protector Version

Order no.	GPD5008NP	GPD5008NCP	GPD5008NOP	GPD5008SP	GPD5008SCP	GPD5008SOP
Protection to IEC 60529	IP67**	IP67**	IP67**	IP67**	IP67**	IP67**
Weight [kg]	1.03	1.2	1.2	1.03	1.2	1.2

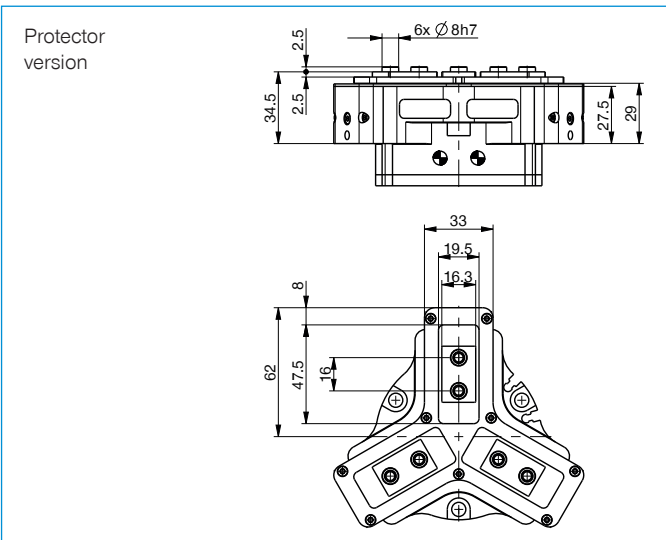
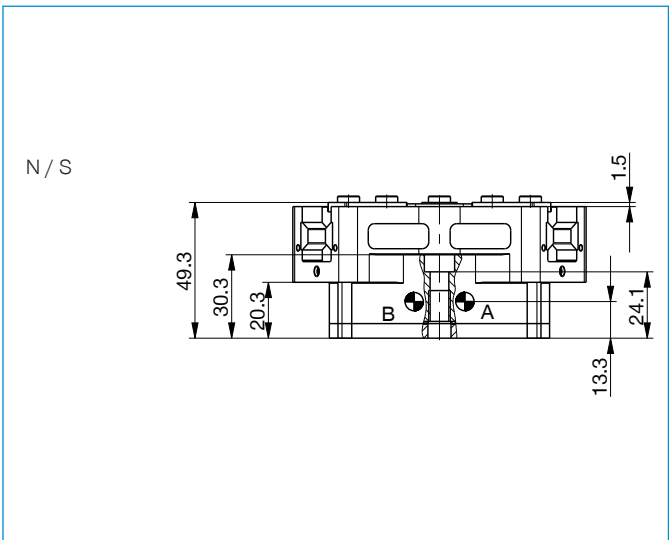
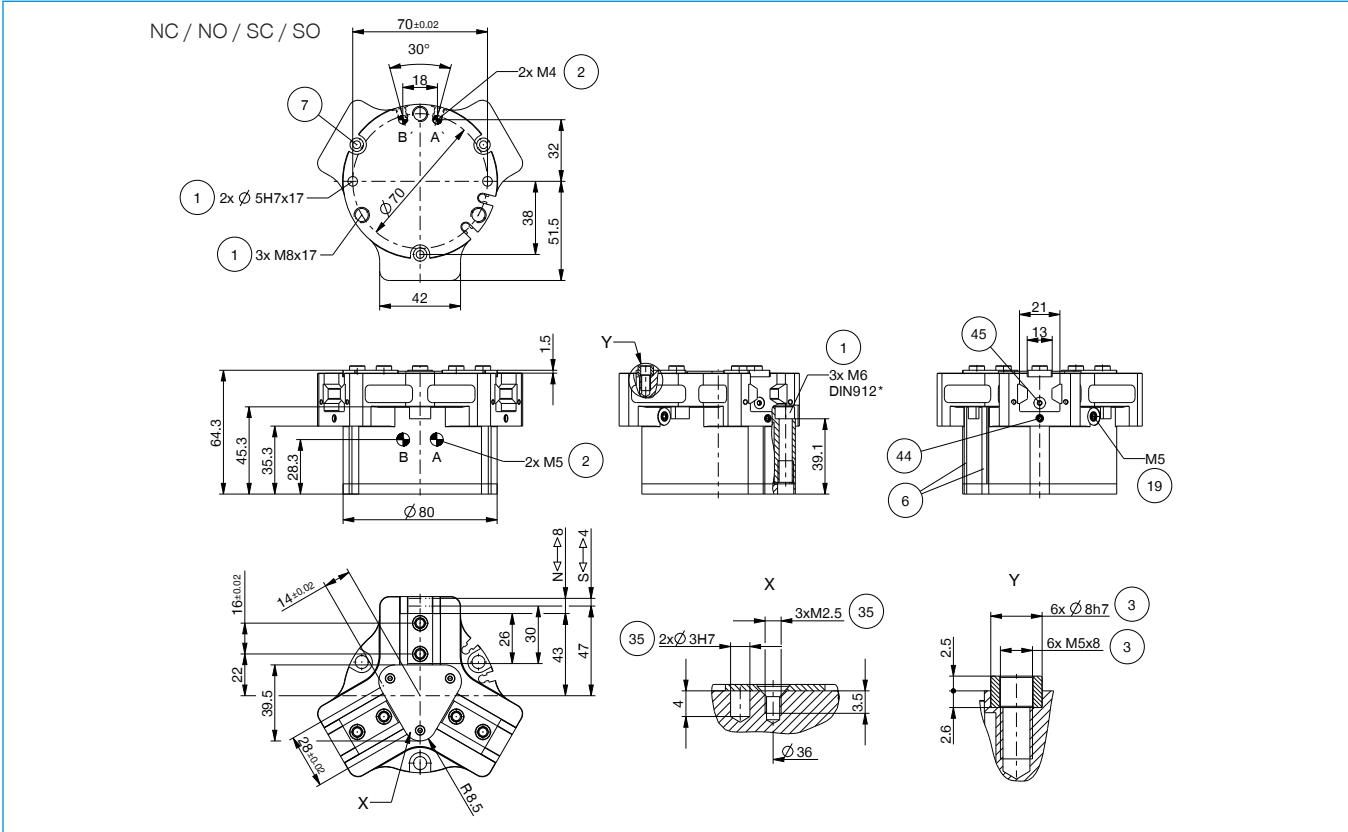
▶ Technical Data - High Temperature Version

Order no.	GPD5008NT	GPD5008NCT	GPD5008NOT	GPD5008ST	GPD5008SCT	GPD5008SOT
Operating temperature [°C]	-10 ... +130	-10 ... +130	-10 ... +130	-10 ... +130	-10 ... +130	-10 ... +130

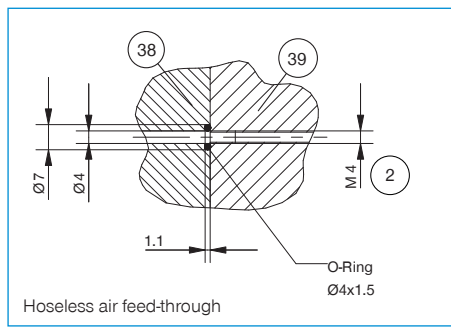
* All data measured at 6 bar

** with purged air

▶ TECHNICAL DRAWINGS



- ① Gripper attachment
- ② Energy supply
- ③ Fixing for gripper finger
- ⑥ Integrated slot for magnetic field sensor
- ⑦ Mounting block
- ⑱ Air purge connection option
- ⑳ Attachment option for customer-specific fittings
- ㉔ Adapter
- ㉙ Gripper
- ㉚ Clamp for sensor
- ㉛ Switch cam adjustment
- Ⓐ Air connection (close)
- Ⓑ Air connection (open)
- Ⓐ Air connection, alternative (close)
- Ⓑ Air connection, alternative (open)

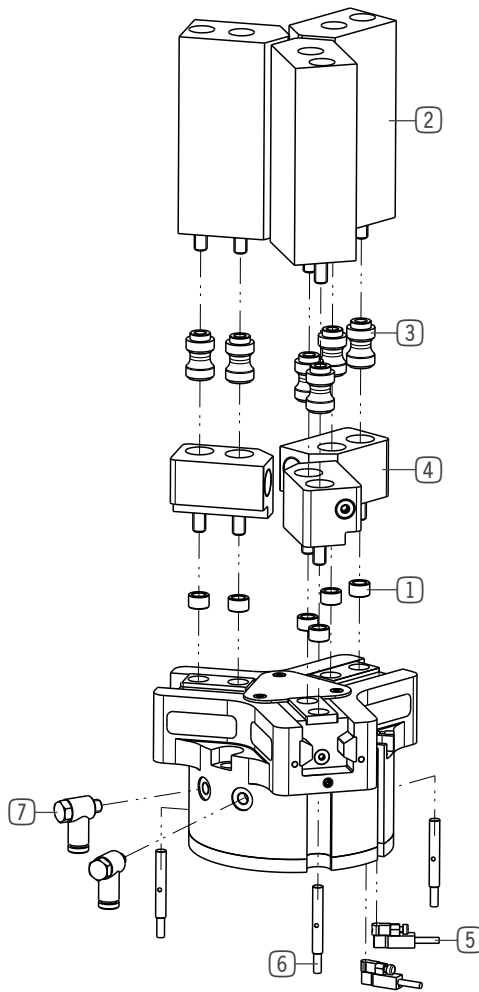


3-JAW CONCENTRIC GRIPPERS

INSTALLATION SIZE GPD5008

1

Installation size GPD5008 / 3-Jaw Concentric Grippers / pneumatic / Grippers



▶ INCLUDED IN DELIVERY



Centering Disc

024231

► RECOMMENDED ACCESSORIES



Universal jaw aluminium
UB5008AL



Universal jaw steel
UB5008ST



Pressure piece N / S
ADS5008-01



Pressure piece NC / NO / SC / SO
ADS5008-02



Changeable jaw, loose-part-set
WB5008L



Changeable jaw, fix-part
WB5008F



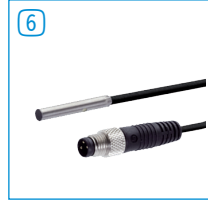
Magnetic field sensor Angled Cable 0,3 m - Connector M8
MFS103SKHC



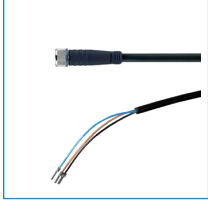
Magnetic field sensor Straight Cable 0,3 m - Connector M8
MFS204SKHC



2-Position-Sensor Cable 0,3 m - Connector M8
MFSP2SKHC-02



Inductive Proximity Switch Cable 0,3 m - Connector M8
NJ4-E2SK-01



Plug-in connector Straight Cable 5m - Socket M8 (female)
KAG500



Angled Fittings - Quick Connect Style
WVM5



Pressure Safety Valve
DSV1-8



Compensation module N / S
ZUB5008DNS



Compensation module NC / NO / SC / SO
ZUB5008DCO

► TECHNICAL DRAWINGS ACCESSORIES

